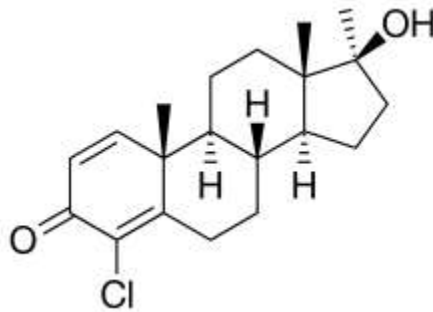


Turinabol

4-Chlorodehydromethyl testosterone Tablet, USP



DIN 01057667

10 mg

100 tablets, Square container

Systematic name: 8R,9S,10R,13S,14S,17S)-4-chloro-17-hydroxy-10,13,17-trimethyl-7,8,9,11,12,14,15,16-octahydro-6H-cyclopenta[a]phenanthren-3-one

DESCRIPTION

Turinabol (Chlorodehydromethyltestosterone) is a derivative of Methandrostenolone that does not promote water retention and estrogenic side effects. Chlorodehydromethyltestosterone is an oral anabolic steroid that has a predominantly anabolic effect combined with a relatively low androgenic component.

COMPOSITION

Each tablet contains: Medicinal ingredients. 4-Chlorodehydromethyltestosterone 10 mg. Non-medicinal ingredients. Microcrystalline cellulose, calcium carbonate, steric acid, magnesium stearate.

CLINICAL PHARMACOLOGY

Chlorodehydromethyltestosterone binds tightly to the androgen receptor in order to exert its effects. These include dramatic increases in protein synthesis, glycogenolysis, and muscle strength over a short space of time. Because 4-Chlorodehydromethyltestosterone is a 4-chloro alteration, Chlorodehydromethyltestosterone does not interact with aromatase enzyme. Thus, it

does not cause major estrogenic side effects. Chlorodehydromethyltestosterone is 17-alpha alkylated, so it must be used along with liver support supplements.

INDICATIONS

Physical ability enhancement. Chronic debilitating diseases especially in elderly patients to correct defective protein metabolism. Hypoplastic, haemolytic or malignancy associated anaemia. Renal insufficiency. Following surgery, burns or major illness.

CONTRAINDICATIONS

Risk of liver toxicity and lowering of blood's ability to clot.

DOSAGE AND ADMINISTRATION

Chlorodehydromethyltestosterone exhibits a half-life of 16 hours, which is considerably long for an oral anabolic steroid when other compounds such as methandrostenolone are taken into consideration with its half-life of 4.5 – 6 hours. As a result, there is normally no requirement to split up Chlorodehydromethyltestosterone doses throughout the day. Many individuals would do perfectly fine to administer the full dose in the morning upon waking up, for example. If one wishes to split up Chlorodehydromethyltestosterone doses throughout the day, it can be done without issues as well, but normally with a 16 hour half-life Chlorodehydromethyltestosterone does not require split doses any greater than twice per day. If split-dosing protocols are to be used, a common practice is to consume half of the daily Chlorodehydromethyltestosterone dose upon awakening in the morning, and the second in the evening.

Bodybuilding and athletics use:

Dosage for men:

Depending on the individual's goals, beginners may be comfortable with a Chlorodehydromethyltestosterone dose in the range of 15-30 mg per day, although this is considered a low dose range where gains will not be exceptionally dramatic by any means. Such a Chlorodehydromethyltestosterone dose would provide noticeable but steady lean gains and almost nothing in the way of androgenic side effects (except for those most sensitive to androgenic effects, for example). Intermediate anabolic steroid users would definitely find even greater progress in the way of strength and mass gains upwards of 30 – 50mg per day with still very low incidences or chances of androgenic side effects manifesting. Advanced Chlorodehydromethyltestosterone doses land in the range of 50-80 mg per day (and sometimes even higher), which would of course provide more dramatic strength and mass gains but at the expense of increased androgenic side effects at such an increased Chlorodehydromethyltestosterone dose. In general, however, most users find satisfactory results in the middle of the total previously mentioned doses, which would be around 50 mg per day. Doses lower than 40 mg per day tend to be utilized merely for the preservation of lean mass during fat loss and cutting phases.

Dosage for women:

Chlorodehydromethyltestosterone doses would land in the range of 5-10 mg per day. Chlorodehydromethyltestosterone is regarded as one of the more suitable anabolic steroids for females, given its androgenic rating of 6. The extremely weak androgenic nature of Chlorodehydromethyltestosterone is what grants female Chlorodehydromethyltestosterone users with the ability to experience considerable strength and physique changes with very little to no androgenic side effects. However, doses of 10 mg or more per day can have side effects virilization.

STORAGE INSTRUCTIONS

Store Turinabol at room temperature, between 15-30 degrees Celsius (59° to 86° F), in a tightly closed, light-resistant container. Keep out of reach of children