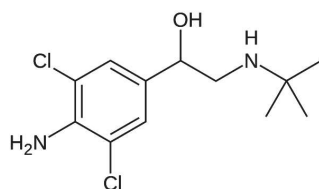


Clenbuterol

Clenbuterol Tablet, USP



DIN 06194321

20 mcg

50 tablets, Square container

Systematic name: (RS)-1-(4-Amino-3,5-dichlorophenyl)-2-(tert-butylamino)ethanol

DESCRIPTION

Clenbuterol is a sympathomimetic amine prescribed to patients with a breathing disorder as a decongestant and a bronchodilator. People with chronic breathing disorders such as asthma use this as a bronchodilator to make breathing easier. Bodybuilding and athletics use Clenbuterol with its anti-catabolic property strongly promotes to fat loss effect within the dry mass production process.

COMPOSITION

Each tablet contains: Medicinal ingredients. clenbuterol hydrochloride, 20 mcg.

Non-medicinal ingredients. Microcrystalline cellulose, calcium carbonate, steric acid, magnesium stearate.

CLINICAL PHARMACOLOGY

Bodybuilding and athletics use Clenbuterol is a β_2 agonist with some structural and pharmacological similarities to epinephrine and salbutamol, but its effects are more potent and longer-lasting like the ones of a stimulant and a thermogenic drug. It causes an increase in aerobic capacity, central nervous system stimulation, blood pressure, and oxygen transportation. It increases the rate at which body fat is metabolized while increasing the body's BMR. It is commonly used for its smooth muscle-relaxant properties as a bronchodilator and tocolytic.

INDICATIONS

Clenbuterol is primarily used to treat breathing disorders or lung diseases such as asthma. It is, however, also widely used as a weight-loss supplement or bodybuilding supplement. This drug, which also acts as a decongestant, causes the body to burn body fat to use as energy, resulting in increased in body temperature.

CONTRAINDICATIONS

Clenbuterol must not be taken by individuals suffering from cardiac rhythmic disturbances or those with cardiovascular diseases. Pregnant women are advised against taking this drug.

ADVERSE REACTIONS

Clenbuterol can affect the central nervous system, causing an individual to sweat excessively. Women may experience more intense sweating at some point in their hormonal cycle. According to some users, however, sweating is an expected clenbuterol effect and is a sign that the drug is working. Other side effects include nervousness, nausea, muscle tremors, and heart palpitations. After a week or more of taking the drug, some individuals may become used to it, thereby gradually reducing the number of side effects. Clenbuterol provokes hardening of the walls of the heart. Since clenbuterol acts as a stimulant, it raises the heartbeat and increases the muscles activity, resulting in a stiffening of the heart wall, which may lead to heart failure.

KNOWN SYMPTOMS OF OVERDOSAGE AND TREATMENT

Hypophosphatemia, taurine depletion, headaches, tremors, breathing difficulties, vertigo, stroke.

STORAGE INSTRUCTIONS

Store clenbuterol at room temperature, between 15-30 degrees Celsius (59° to 86° F), in a tightly closed, light-resistant container. Keep out of reach of children.